

## FO GX Industrial Videoscope



Applicable to check all foreign objects, welds, blockage, defects in kinds of pipelines, containers, parts and equipment; and can also be used for counter-terrorism, search and rescue . etc.

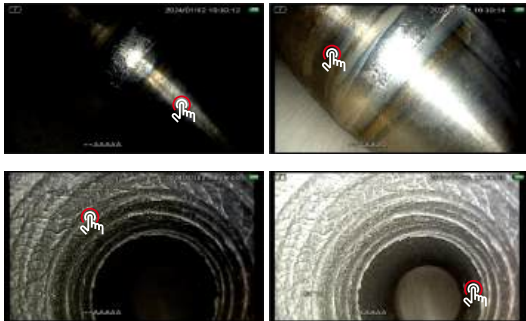


Scan the code to watch the video

### Features

#### Touch area exposure adjustment

Click the corresponding position on the screen to adjust the exposure of that area. Avoid repeatedly adjusting the probe angle, light intensity, etc. to increase work efficiency



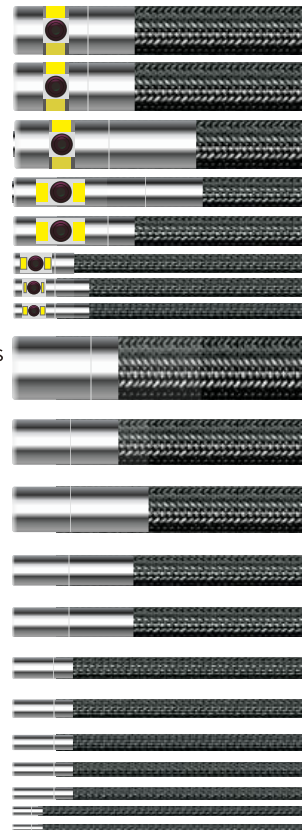
#### Wireless charging

Place the host on the base for fast wireless charging. The device can work while charging, greatly improving battery life



#### Multiple configurations

- Small diameter probes 1.0/1.2/1.8mm
- 2.4/2.8mm probe with 500,000 pixel
- 4/6/8mm 1080P probe
- White light/ ultraviolet/infrared probes
- Diameter more than 2.0mm probes with side view/ dual view HD
- 6/8mm dual view probes zoom function probes
- 6/8mm dual view probe with salvage tools, etc.



## Parameters

### Controller parameters

Case size	548X458X198mm	Frame rate	30 fps
Controller	330X90X150mm	Joystick Control	Servo/manual control
Material	ABS	Removable probe	Yes
LCD size	5 inches	Output port	HDMI/AV
Resolution	1280X720	USB port	Mini-USB B
Contrast	1000:1	Light source	LED/ optical fiber
Brightness	1000 CD/m <sup>2</sup>	Lamp life	100,000 hours
		Brightness control	Manual 5 levels

### Software operation

White balance	Manual/ Auto
Video output	Manual NTSC/PAL
Video input	Automatically identify S terminal of NTSC/ PAL
SD card	64G
Operation system	Multi-tasking system, touch /menu operation
Image control	Real-time image 5- levels and 5 times magnification, stored image 5-level and 3 times magnification
Image format	JPG 1200×720
Video format	MOV 1280×720
Software update	The device can be upgraded via USB flash drive
Languages	14 Languages
Text annotation	150 characters
Function	<b>Image mode (noise reduction , highlight) / Picture freezing / Screen rotation /Temperature sensor/ Led brightness level display /Image rename /Negative /Ruler measurement/ WIFI video transportation</b>

### Small Diameter Series

Probe Diameter	1.0mm	1.2mm	1.6mm	1.8mm	2.0mm
Camera housing length	4mm	4mm	6mm	6mm	6mm
Probe Length	1M	1M	1.5M	1.5M	1.5M
Sensor	CMOS1/32	CMOS1/32	CMOS1/32	CMOS1/18	CMOS1/18
Pixels	160,000	160,000	160,000	160,000	<b>500,000</b>
Depth of Field	3~30mm	3~30mm	3~30mm	5~50mm	5~50mm
FOV	>120°	>120°	>120°	>120°	>120°
DOV	0°	0°	0°	0°	0°
Illumination Output	>3000lux	>3000lux	>3000lux	>3000lux	>3000lux
Articulation	NA	NA	NA	NA	2 way

### Regular Series

Probe Diameter	2.4mm	2.8mm	3.9mm	3.9mm	6.2mm	6.0mm
Camera housing length	6mm	6mm	10mm	18mm	13mm	18mm
Probe Length	1.5M	1.5M	2/3M	2/3M	2/3.5/6M	2/3.5M
Sensor	CMOS 1/18	CMOS 1/18	CMOS 1/9	CMOS 1/9	CMOS 1/6	CMOS 1/6
Pixels	500000	500000	720P	720P	<b>1080P</b>	<b>1080P</b>
Depth of Field	5~50mm	5~50mm	8~80mm	15mm~∞	10~100mm	18mm~∞
FOV	>120°	>120°	>120°	>90°	>120°	>80°
DOV	0°	0°	0°	0°	0°	0°
Illumination Style	<b>LED /Fiber</b>	<b>LED /Fiber</b>	LED	<b>Fiber</b>	LED	<b>Fiber</b>
Illumination Output	>3500lux	>5000lux	>18000lux	>60000lux	>60000lux	>160000lux
Articulation	2 way	4 way	4 way	4 way	4 way	4 way

## Side View Series

Probe Diameter	2.0mm	2.4mm	2.8mm	3.9mm	3.9mm	6.0mm	6.4mm	6.0mm	6.4mm
Camera housing length	10mm	10mm	8mm	16mm	25mm	16mm	24mm	22mm	24mm
Probe Length	1.5M	1.5M	1.5M	2/3M	2/3M	2/3/6M	2/3.5/6M	2/3.5M	2/3.5/6M
Sensor	CMOS 1/18	CMOS 1/18	CMOS 1/18	CMOS 1/9	CMOS 1/9	CMOS 1/9	CMOS 1/9	CMOS 1/6	CMOS 1/6
Pixels	500000	500000	500000	720P	720P	720P	720P	1080P	1080P
Depth of Field	5~50mm	5~50mm	5~50mm	5~25mm	F: 8~80mm S: 5~25mm	8~80mm	F: 8~80mm S: 5~25mm	8~80mm	F: 8~80mm S: 5~25mm
FOV	>90°	>90°	>120°	>90°	>90°	>90°	>90°	>90°	>90°
DOV	90°	90°	90°	90°	0°&90°	90°	0°&90°	90°	0°&90°
Illumination	>3000lux	>5000lux	>5000lux	20000lux	20000lux	40000lux	F: 40000lux S: 20000lux	40000lux	F: 40000lux S: 20000lux
Output									
Articulation	2 way	2 way	4 way	4 way	4 way	4 way	4 way	4 way	4 way

## Special Series

	Working Channel	UV (365nm)	UV (365nm)	Zoom lens	Extra long style	Infrared (940nm)	Infrared (940nm)
Probe Diameter	6.4mm	4.5mm	6.4mm	8.4/ (6.4) mm	6.2/8.4mm	4.0 mm	6.0mm
Camera housing length	18mm	16mm	16mm	23mm	16mm	18mm	16mm
Probe Length	2/3M	2/3M	2/3.5M	2/3.5M	10M	2M/3M	2M/3.5M
Sensor	CMOS 1/9	CMOS 1/9	CMOS 1/7.5	CMOS1/4(1/6)	CMOS 1/7.5	CMOS 1/9	CMOS 1/7.5
Pixels	720P	720P	720P	720P	720P	720P	720P
Depth of Field	15mm~∞	8~80mm	5~50mm	6/(5)mm~∞	12mm~∞	60mm~∞	60mm~∞
FOV	>90°	>120°	>120°	>90°	>120°	>70°	>80°
DOV	0°	0°	0°	0°	0°	0°	0°
Illumination Style	LED	LED	LED	LED	LED	Infrared light	Infrared light
Illumination Output	>18000lux			>60000lux	>60000lux		
UV irradiance		1000uw/cm <sup>2</sup> @ 2cm	2500uw/cm <sup>2</sup> @ 2cm			>7M	>15M
Articulation	4 way	4 way	4 way	4 way	4 way	4 way	4 way

## Aerospace



## Machining

## Heavy industry



## Wind power



# FIBEROPTIC

Remote Visual Inspections